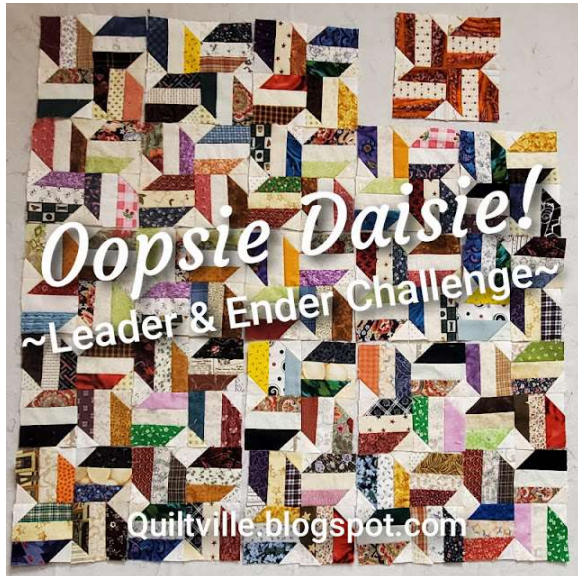


Oopsie Daisy!

Leader & Ender Challenge 2023



Block Size: 6" or 9"

©2023 Bonnie K Hunter. All Rights Reserved

Happy Friday, Quiltvillians!

Today is the day you've been waiting for - and so have I.

This is something that has been playing in my head for nearly a year - well at least since last Fall when one of my Quiltville Inn retreaters had an "Oopsie!" moment and we turned that lemon into lemonade!

Do you remember Ditch Lilies quilt? It was such a fun one to make. PDF pattern available in both the Quiltville Store and the Quiltville Etsy Pattern Shop.



[Quiltville.com/shop](https://www.Quiltville.com/shop)
[QuiltvilleLLC.Etsy.com](https://www.QuiltvilleLLC.Etsy.com)

And if you do you might also remember this unit:



These were quick and easy -



But what happens when you put the stitch 'n flip corner on the WRONG corner?

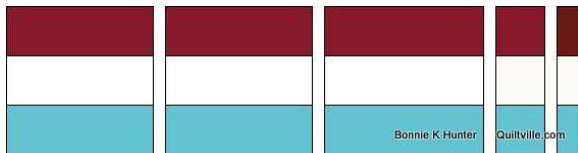
OOPSIE! and if you do it 4 times wrong - no worries! We get new opportunities:

We pinwheeled those babies and look what we got!

Oh, this has possibilities!



From here my mind was in overdrive. While this is much like my own Star Struck quilt from the free patterns tab on my blog at Quiltville.blogspot.com. It's just a bit different using 3 strips instead of 2 in the strip set.



I'm going to give you two options for the unit size - you choose which best suits your scraps.

I used 1 1/2" strips of colors and neutrals along with 1 1/2" squares for the corners. This gives me a 3" finish block quarter. My Oopsie Daisy blocks finish at 6".

If you want to make a 9" Oopsie Daisy block, start with 2" strips and 2" corner squares. Your block quarters will be trimmed at 5" and finish at 4 1/2" in the 9" block. Your corner squares are 2". You will need to remember the size you are trimming as my instructions below are for the 3 1/2" block quarter size.

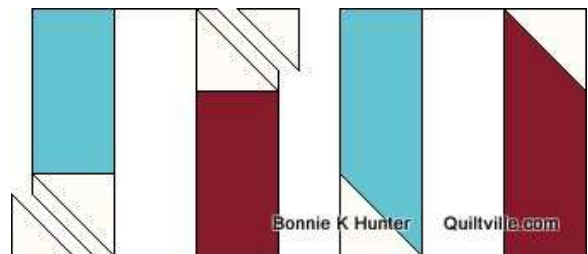
Stitch colored strips to both sides of a center neutral strip. Press seams toward the colored strips.



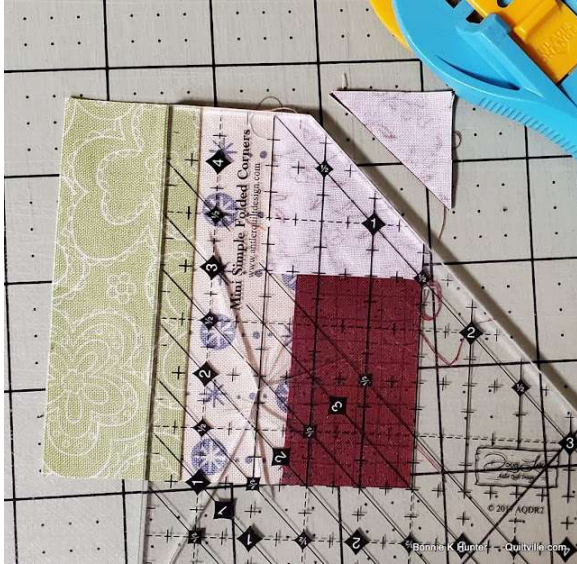
Ready to add corners in Leader & Ender fashion!

Subcut strip sets into 3 1/2" increments. Some of my strip sets left me enough to get a 1 1/2" cut out of the end! I'm saving those in a baggie for possible 9-patches later.

I have these sitting on my cutting table so I can prep the corners to add in batches - I'll do a bunch before I sit down to sew, and when I run out, I'll prep some more and keep that Leader & Ender project going.



Corner time!



For each block quarter unit cut 2 neutral 1 1/2" corner squares.

I find the Simple Folded Corners or Simple Folded Corners Mini ruler helpful for the stitch & flip corners on these units.

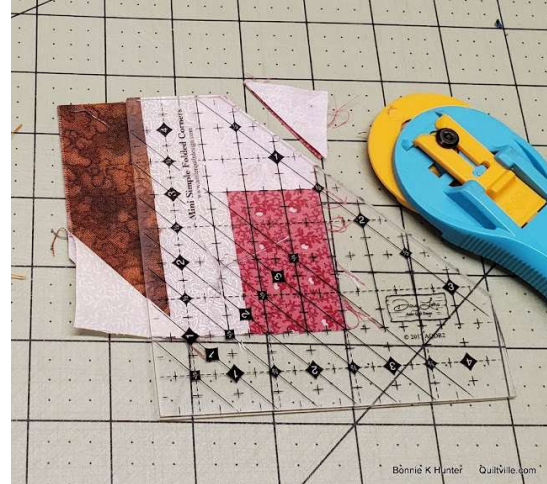
I use these rulers all of the time. They come in a large and a smaller size. (Small size shown.) If you don't have them, invest in yourself and get them!

Quiltville.com/shop.html

Place the diagonal 1/4" line on the ruler (Mini shown) on the diagonal of the corner square and trim leaving 1/4" seam allowance. Stitch.

Press seam out toward the triangle just added.

Rotate the unit to add the next corner across the diagonal of the unit. Trim as for first corner, and stitch.



Press this second seam allowance under toward the center of the unit to facilitate nesting of seams.



Pressing Matters! One in and one out!

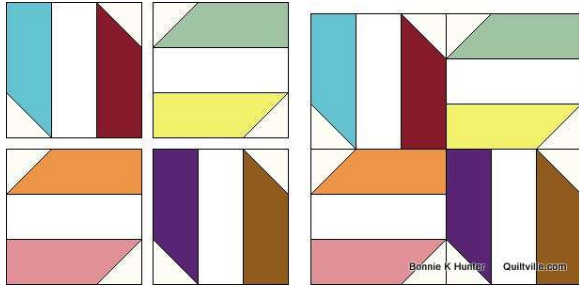
If you don't have access to the rulers, draw a diagonal line from corner to corner on the back side of the neutral 1 1/2" squares.

Things to remember - The drawn line is NOT your sewing line. It is your FOLD LINE. DO NOT SEW DIRECTLY ON THE LINE. If you do - your folded corner triangle will always be short and not reach where it needs to go.

When sewing: Place your needle to the RIGHT of the line, into the seam allowance. The left

side of the sewing machine needle is right up against the line, but now the fabric can fold up and over the thread to reach the edges of the unit.

Sew slowly, and carefully. Trim leaving 1/4" seam allowance. Press one corner seam allowance out toward the corner triangle, and the opposite corner in toward the block center.



Block Assembly!



Nesting seams! Follow the arrows!

I start by position the upper left unit as shown with the "press out" corner in the upper right of the unit.

Rotate the next 3 units so that a "press in" triangle nests with the "press out" triangles all the way around.



See how they work from the back side?

It is important to make ALL blocks in the same way so that they will nest when placed together in the quilt. Don't change up your in or out corners!



This challenge is going to use up a lot of those older fabrics I have hiding in my 1 1/2" strip drawer. Do you have some of those too? Use them up - the more the merrier!



My first batch - plus the original *Oopsie Daisy!*

I prepped 24 block quarters, matching them with the neutral corners and set them by my machine for use as Leaders & Enders in between sewing the lines of other things.

The hardest thing to remember? The pressing. One corner out - one corner in. Keep it going consistently!



Where things stand today.

As I start to work behind the scenes on this year's upcoming Quiltville Winter Mystery - I

know I'll be making more Oopsie Daisy blocks as Leaders & Enders. It's going to go fast.

Of course, if I wanted to slow it down I could cut my strips into individual 1 1/2" x 3 1/2" rectangles and assemble THOSE as the base unit Leader & Ender style too - but life is moving too quickly for me to go that route.

I know that when I feel like simply sewing, but don't know what exactly I want to work on, I can easily sew strip sets and sub cut them to be ready for more corner adding.

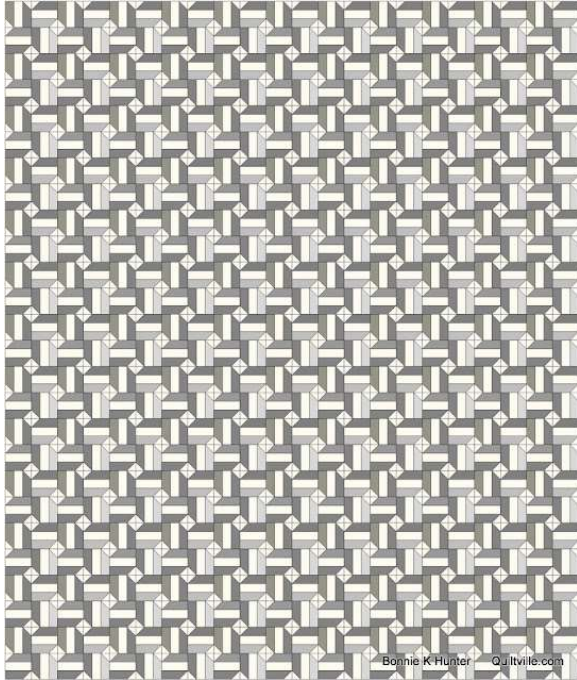


Once you have a bunch of block quarter units made, and you feel there is enough variety, you can start building the Oopsie Daisy blocks as Leaders & Enders too.

I've been working on other things (And have been gone for a month as well) so I didn't worry about building blocks - just block quarters. Now I'm ready to start turning these units into blocks.

How many blocks do you need? It depends on your own vision!

My blocks are 6" finished made from 1 1/2" strips. I made this grayscale mock up just to check how I'd like to go:



Blocks set 11 X 13 gives me a quilt center that measures 66" x 78".

I may go bigger. Or I may add borders. That's the beauty of Leader & Ender projects. They just kind of grow on the side and gently nudge you as to what you want to do next. Listen to what your project tells you.

Maybe your quilt will want borders. Maybe it won't.

Just listen. And go with it!

If you loved this pattern, please check out my other designs found both under the free patterns tab on my blog at Quiltville.blogspot.com and in the Quiltville Store where my books (paperback) notions, tools, and other goodies along with my digital patterns are found right at your fingertips at Quiltville.com/shop.html

Digital patterns are also available in the Quiltville Etsy Pattern Shop at QuiltvilleLLC.Etsy.com

Find me on Instagram @quiltville_bonnie
Facebook: QuiltvilleFriends & Quiltville LLC
Facebook Group: Quiltville's Open Studio
And my daily blog: Quiltville.blogspot.com

This digital PDF pattern is given for personal use only.

No part may be reproduced or transmitted in any form by any means, electronic or mechanical including printing or photocopying for sharing, scanning or by any information storage and retrieval system without permission in writing from the author.

Please no uploading and saving of this file with intent to share, email or distribute, either digitally or in hard copy.

Please help me continue to design and show your support by sending your friends to my website to download their own copy.

This pattern is only available as a digital download from Quiltville.blogspot.com

©2023 Bonnie K Hunter. All Rights Reserved