



Happy JULY!!

You know what time of year that makes it?

July is when we kick off our Leader & Ender project for the coming year.

This is all about choosing a part of our Scrap User's Systems that may be a bit neglected, or a bit over flowing and putting them to good use!

Leaders & Enders are individual pieces used instead of just removing your work from the machine leaving long thread tails, and to STOP the insanity of a thread covered folded over throw away piece of fabric to keep the piecing continuous. Why throw that thread away?

Use purposeful pieces to sew together in between the lines of your chain piecing and at the end of the year, you'll have most-if not all- of a quilt put together!

If this is your first go around with Leaders & Enders you can find out more about the process by reading my article on Leaders & Enders found under the Tips & Techniques tab at the top of the blog at [Quiltville.blogspot.com](http://Quiltville.blogspot.com)

I've also written two books on the subject, and you can find those in Quiltville's Online Store. [Quiltville.com/shop.html](http://Quiltville.com/shop.html)

So how is this going to work?!

YOU GET TO CHOOSE YOUR SIZE!!

There are many templates out there for cutting tumblers. Maybe you have one. That's great!

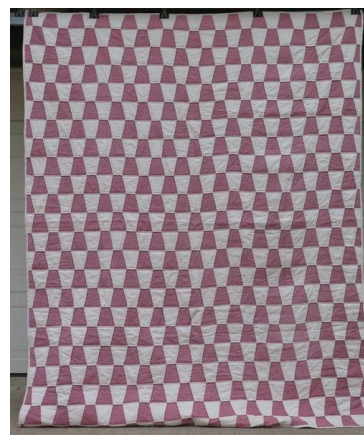
Maybe you have a die cutting system like Accuquilt and have their die for a tumbler shape. That's great too!

You can use ANY SIZE of tumbler to build your tumbler quilt – however, if you are going with the 5" size, I better see two quilts coming out of your stash by the end of next year –ha!

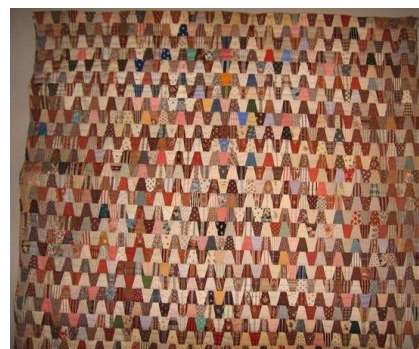
While the other quilts we've done so far as Leader & Ender Challenges have been built as block units, either square or rectangular – this will be a bit different.

Tumbler quilts are sewn in ROWS across the quilt.

I have pinned several tumbler quilts to my [Pinterest Tumbler Quilts](#) board for inspiration!



Vintage tumbler in two colors!



Antique tumbler in scrappy Darks & Lights!



This is one I posted back in 2013 from one of my trips:



This is another from one of my antique jaunts to Verona, VA!

Yes, I've had tumblers on the brain for a long time!



One in plaids:



One in brighter colors:



Tumblers vary in shape, height, width with some being taller and skinnier, some being fat and shorter...it's ALL good!

I will be cutting my tumblers from 2.5" squares using the Easy Dresden Tool:





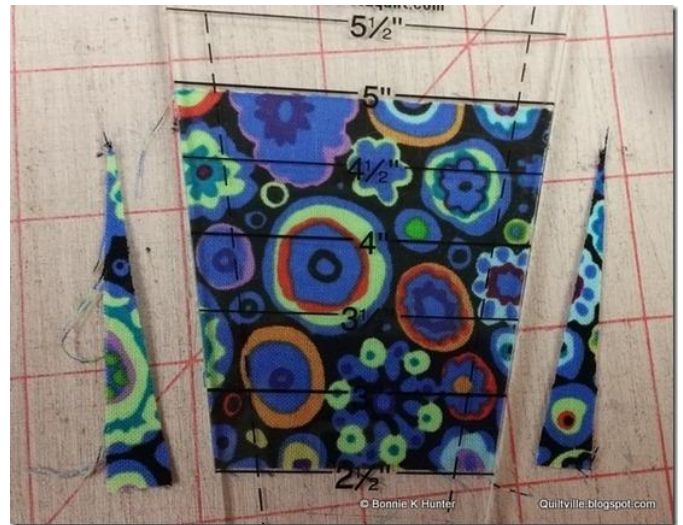
It's NOT just for Dresden Plates!  
And you can find it in the tools section of my  
online store. [Quiltville.com/shop.html](http://Quiltville.com/shop.html)

With this one tool I can easily cut tumbler  
shapes in multiple sizes!

I cut samples in 3 sizes!



From a 2" square!  
Align the square between the 3" and 1"  
markings! Trim sides!



From a 2 1/2" square!  
Align the square between the 5" and 2 1/2"  
markings! Trim sides!



From a 3 1/2" square!  
Place the top edge of the ruler against the top  
edge of the square.  
The 4 1/2" line will be at the bottom of the  
square. Trim sides!

Barely any waste at all – it's certainly not worth  
saving!



Here is how it works with a 2.5" strip:



I can cut through 4 strip layers easily!

Align the strip set between the 2 1/2" and 5" lines on the ruler with the ruler on top of the cut strip set as shown. Cut the sides of the tumbler. Flip the template, reversing the top for the bottom and make another cut.

Cutting from 2" or 3 1/2" strips is the same as cutting from the 2 1/2" strip as shown above.

I have decided to go with the 2 1/2" size for my own project..because I still have THIS to contend with:



The 2 1/2" squares bin still over-floweth!



Sewing sample pieces. Offset them just a hair!

When you open the seam it should look like this:



They should open straight across into a nice straight edged row!

Press seams every other one, in this case, I pressed to the dark.

I did some test sewing too:





Yeah! These are going to be fun!

My plan is to cut a few stacks of tumbler shapes at a time from my 2 1/2" squares to have enough variety next to my machine that I can easily add on to each row as a Leader & Ender project.

Rows can be as many tumblers across as you want them to be for the size you want your quilt to be. I am not giving amounts to cut – There are too many different variables to figure out...just let it be fun!

Piece a row as wide as YOU want it to be...count the tumblers in the row and do some simple math to figure out how many rows you want to give you the quilt size that you need.

Ready? Set? TUMBLE!

*Bonnie*

© 2015

Bonnie K Hunter-Quiltville.com

All Rights Reserved